

Velodyne WiConnect System 2



Wireless audio transmitter for music and home cinema systems

► Velodyne Acoustics has relaunched the WiConnect System: the second generation of the wireless audio transmitter can transmit a full stereo signal. AV-Magazin tested the compact system's capabilities and how it performs in practice.

Hi-fi systems can sometimes present challenges when it comes to using certain modern features. Many music lovers want sound systems for multiple rooms, but even

some of the latest amplifiers don't offer this option. So how can you play music in another room? Wireless speakers are, of course, an alternative to traditional devices, but they don't always meet the demands of listeners who are particular about quality. If you don't want to sacrifice the 'mature' sound of your beloved hi-fi components and carefully selected speakers, you'll find yourself caught between sound quality and convenience.

Key Facts Velodyne WiConnect System 2

- Wireless audio transmitter
- Line input stereo/LFE RCA
- 5.8 GHz RF connection between transmitter and receiver
- Flexible power supply with USB cable

The same applies to the additional cables required for rear speakers, for example, if you want surround sound. Some prospective buyers are also put off by app-based systems and prefer to keep things as simple as possible. For this and many other scenarios, Velodyne Acoustics offers an amazingly simple solution with the 'WiConnect System 2'. The ',2'' at the end of the model name indicates that this is the second generation of this smart system. Consisting of a transmitter and a receiver, the set sends audio signals wirelessly from the transmitter to the receiver. The WiConnect System 2 thus establishes a wireless connection between different devices, as well as between traditional and user-friendly requirements.

Solution provider for stereo and home cinema

Compared to the previous model, the transmitter and receiver have a new and attractive form factor. They are each approximately the size of an Apple TV, and their glossy black housings are reminiscent of that popular device. Therefore, space requirements are not an issue, as WiConnect

transmitters and receivers can be easily and discreetly placed. A pair of RCA sockets on the back of each device provide a combined stereo/LFE output or input. As with Velodyne subwoofers, the socket for the right stereo channel also serves as the LFE socket. There are no other inputs or outputs, nor are they needed, as this combination jack offers a wide range of possibilities – far more than you might initially realise.

In the multiroom scenario mentioned earlier, where sound from the main system in the living room needs to be transmitted to a smaller hi-fi system (for example, in the bedroom), the WiConnect System 2 can serve as a wireless connection between the amplifiers. Providing sound for a second listening area is particularly easy if active speakers are available: in this case, a second amplifier is unnecessary as the RCA cable can be connected directly from the receiver to the speakers' RCA input.

Neat and tidy living space

In traditional setups where music is played in one room, the WiConnect System helps reduce cable clutter, creating a tidier living space. This is particularly useful when



Thanks to their small dimensions, the transmitter and the receiver can be placed anywhere, for example behind the TV. Rear holes for standard brackets make it even easier to integrate the units discreetly (Image: Velodyne Acoustics)

signal or speaker cables would otherwise need to be routed over doors or windows. In such challenging situations, the WiConnect receiver enables local control of active speakers, providing an elegant solution.



New form factor with glossy black housing – the WiConnect System 2 has nothing to hide (Image: Velodyne Acoustics)

For a stereo system with active speakers, one RCA cable connects the source to the stereo input of the transmitter, and a second RCA cable connects the stereo output of the receiver to the stereo input of the active speaker.

If longer distances need to be covered, longer cables can, of course, be used instead of the two supplied RCA cables. Regarding active speakers, it should be noted that various scenarios can also be realised with passive speakers, provided that a sufficient number of amplifiers are available for the configuration.

Seamless integration of subwoofers and rear speakers

Another interesting application of the WiConnect system is the seamless integration of subwoofers. To achieve this, connect a cinch cable from the subwoofer output of an AV receiver or amplifier to the LFE input of the transmitter, then connect the LFE output of the receiver to the LFE input of the subwoofer using a second cable. Alternatively, for models from Velodyne and subwoofers from many other manufacturers, you can use the stereo connection. The cabling is the same as for transmitting a full stereo signal, i.e. the RCA cables lead from the WiConnect receiver to the stereo input of the subwoofer.

Another way to connect multiple subwoofers is to pair the transmitter with up to four receivers, enabling each subwoofer to



The combined stereo/LFE input and output opens up numerous scenarios with active speakers and subwoofers (Image: Velodyne Acoustics)

be controlled by a separate receiver. Similarly, greater distances between active speakers can be bridged, and active speakers for the rear channels can be elegantly integrated.

Stable RF connection & flexible power supply

The WiConnect system's flexible power supply offers a practical advantage. The transmitter and receiver operate with a 5-volt



The 5 V supply voltage via USB enables the transmitter and the receiver to be powered by AV receivers, routers and charging stations, for example (Image: Velodyne Acoustics)

supply voltage, provided via the supplied USB charging cable. The device has a USB-C socket, enabling WiConnect transmitters and receivers to be powered by AV receivers, routers, or charging stations. If a conventional mains plug is required, connect the USB cable equipped with a USB-A socket to the supplied mains adapter.

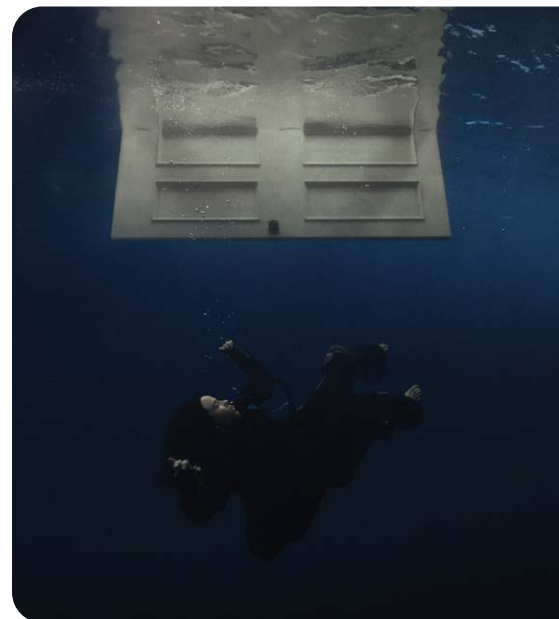
The most significant technical advancement compared to the previous system is the wireless connection between the transmitter and receiver, operating in the 5.8 GHz band. This enables a full stereo signal with 48 kHz resolution to be streamed at a high data transfer rate. This wireless connection is also particularly stable and superior to classic Bluetooth or Wi-Fi solutions in terms of low latency. As soon as the transmitter and receiver are powered up, they automatically pair with each other – very well done! Pairing is indicated by a flashing LED on the device, which lights up continuously once the process is complete, taking about two seconds. In

our tests, transmission worked without any interruption from the office through a wall into the adjacent listening room.

Wireless streaming without compromise

It quickly becomes apparent that sound quality has not been compromised for the sake of convenience here. Billie Eilish's vocals on the album 'Hit Me Hard

and Soft' come into their own, with every breath audible. In 'The Greatest', the acoustic guitar is reproduced with vivid clarity and perfectly timbred body. The Velodyne system then delivers deep bass lines with absolute precision in Len Faki's 'Podium Mix' of Dustin Zahn's techno track 'Stranger (To Stability)', allowing the driving beat to fully unfold its hypnotic effect. There is no loss of sound quality whatsoever compared to a direct RCA connection between the Mytek Brooklyn and the VTL IT-85, and the same can be said for Eydis Evensen's challenging



With Billie Eilish's latest album, 'Hit Me Hard And Soft,' the WiConnect System 2 impressively demonstrates its suitability for high-quality hi-fi and AV systems

album ‚Oceanic Mirror‘: the grand piano is presented in relief on a realistically dimensioned, transparent stage and can be experienced with its full dynamic range and rich timbre. Crystal-clear, sparkling notes ring out against a jet-black background, and the intimate atmosphere of these compositions is immediately touching.



Features

- Stable wireless connection
- Automatic pairing
- Easy to use
- Compact design
- Flexible power supply with USB cable
- Scalable up to 4 receivers
- Stable transmission through walls
- Streaming with 48 kHz resolution
- Excellent sound quality

Characteristics

Wireless audio transmitter, Line input stereo/LFE RCA, 5.8 GHz wireless connection between transmitter and receiver, streaming with 48 kHz resolution, flexible power supply with USB cable and power adapter, USB-C charging socket, scalable up to 4 receivers, automatic pairing, 2 RCA cables included

Verdict

Velodyne Acoustics' WiConnect System 2 offers a simple solution for avoiding cable clutter and has a lot to offer. The combined stereo/LFE sockets on the transmitter and receiver allow for the elegant integration of active speakers and subwoofers. Even in structurally challenging situations, the ‚wireless RCA connection‘ can solve problems. Thanks to their compact size, the transmitter and receiver can be placed discreetly anywhere and can also be powered via USB from AV receivers or routers, for example. Automatic pairing makes the system even easier to use. In practice, the WiConnect System 2 also impresses with its stable 5.8 GHz wireless connection, which works flawlessly through walls. Last but not least, this wireless connection enables 48 kHz audio streaming without any loss of quality. This makes the WiConnect System 2 a solution that we can wholeheartedly recommend, even to discerning listeners. ◀

Review by Marius Donadello
 Pictures: Velodyne & AV-Magazin

Technical specifications*

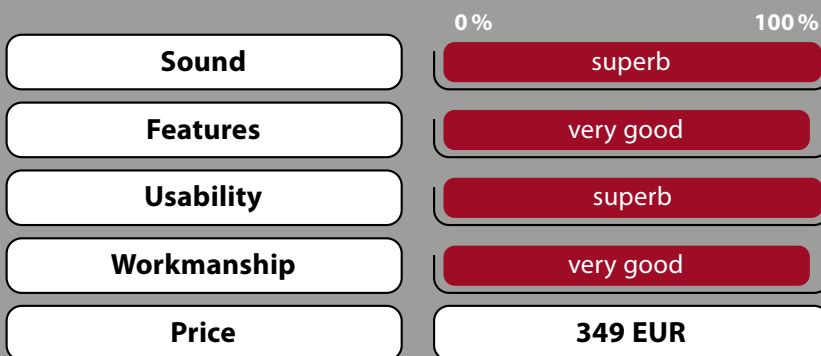
Manufacturer	Velodyne Acoustics, Hamburg
Distributor	Audio Reference, Hamburg
Model	WiConnect System 2
Price	349 EUR
Product category	Wireless audio transmitter
Warranty	2 years
Delivery scope	Transmitter, Receiver, USB charging cable, power supply unit with mains plug, 2 RCA cables, quick start guide, warranty claim card
Inputs	1x Line stereo RCA / LFE
Finish	Glossy black
Dimensions (W x H x D)	90 x 34 x 95* mm (*with connectors)

*Manufacturer's information



Velodyne WiConnect System 2

Audio Reference, Hamburg
Phone: +49 40 53320359, Internet: www.audio-reference.de.de
Product category: Wireless audio transmitter
Weighting: Sound 50%, Features 20%, Usability 20%, Workmanship 10%



Klasse
 Top class

Preis/Leistung
 very good

